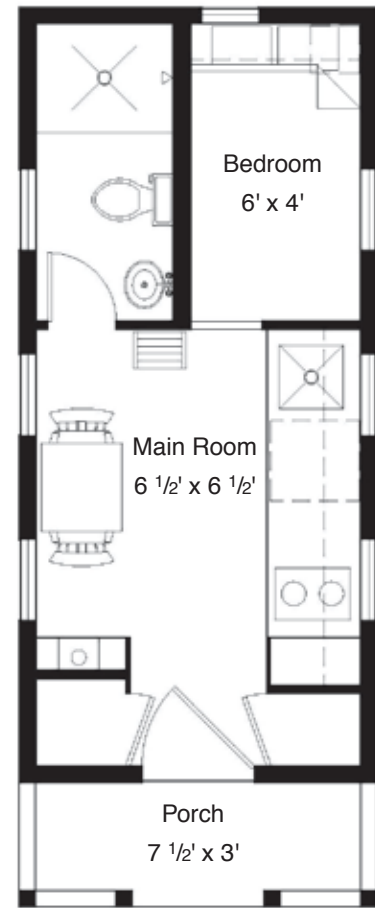


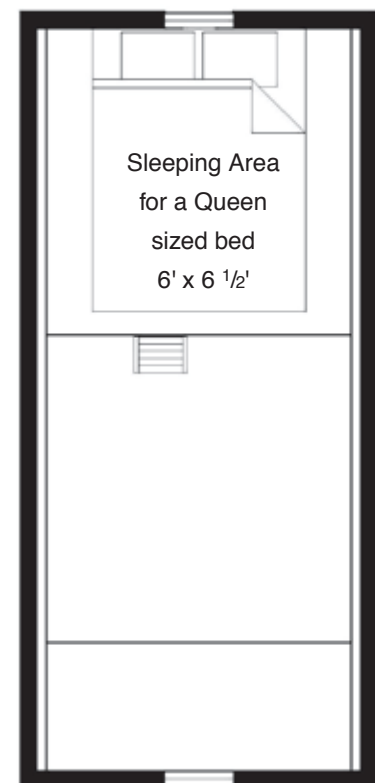
# Lusby



First Floor



Loft



The **Lusby** has a full bathroom, a kitchen (sink, stove top, refrigerator), a mini fireplace, a downstairs bedroom and a loft for additional sleeping or storage. There are also two closets and ample shelving. Because the loft only extends over the bedroom and kitchen area, the rest of the interior remains open to the high cathedral ceiling. In addition to the 117 square feet listed, it also contains more than 50 square feet of loft space.

## Dimensions

|                    |            |
|--------------------|------------|
| Footprint:         | 19' x 8'   |
| Trailer Size:      | 18' x 7'   |
| Road Height:       | 13' 5"     |
| Bathroom           | 6' x 3'    |
| Ceiling height:    | 6' 3"      |
| Loft height:       | 3' 8"      |
| Dry weight:        | ~5400 lbs. |
| Total Square Feet: | 117        |

note: all dimensions are approximate

You can purchase the plans to build this house on my website [www.tumbleweedhouses.com](http://www.tumbleweedhouses.com), or you can purchase it ready made for \$46,997. (prices subject to change)

More pictures are available in the "Small House Book"